



**CREPE MAKER**

**USER MANUAL**

**MODEL NO: HX8073**

# SAFETY INSTRUCTIONS

- Always disconnect from the power supply before cleaning.
- Use non-corrosive detergents to clean the exterior.
- Do not spray water on the temperature control components.
- Avoid strong vibrations, impacts, or inverting the unit during transport.
- Store in a well-ventilated, dry area, free of corrosive gases.

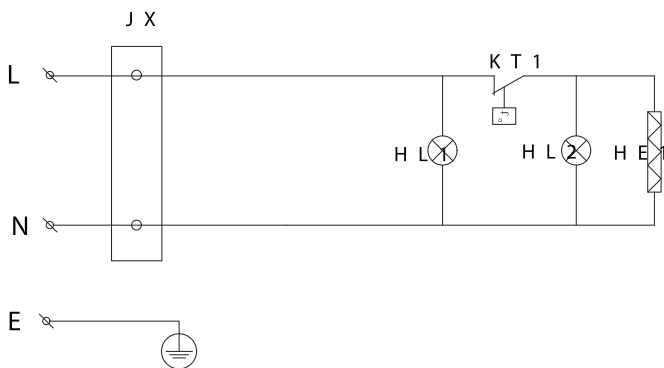
# TECHNICAL SPECIFICATION

Model	HX8073
Voltage	220V
Power	3kW
Frequency	50Hz
Machine Size	400x400x170mm

# OPERATING

- Ensure that the ambient temperature does not exceed 50°C.
- Ensure the voltage matches the unit's specifications.
- Keep the unit away from flammable materials.
- After connecting to the power supply, set the desired temperature. The unit is ready to use once the set temperature is reached.

# ELECTRICAL DIAGRAM



L - Live Wire

N - Neutral Wire

E - Ground Wire

J X - Connecting Terminal

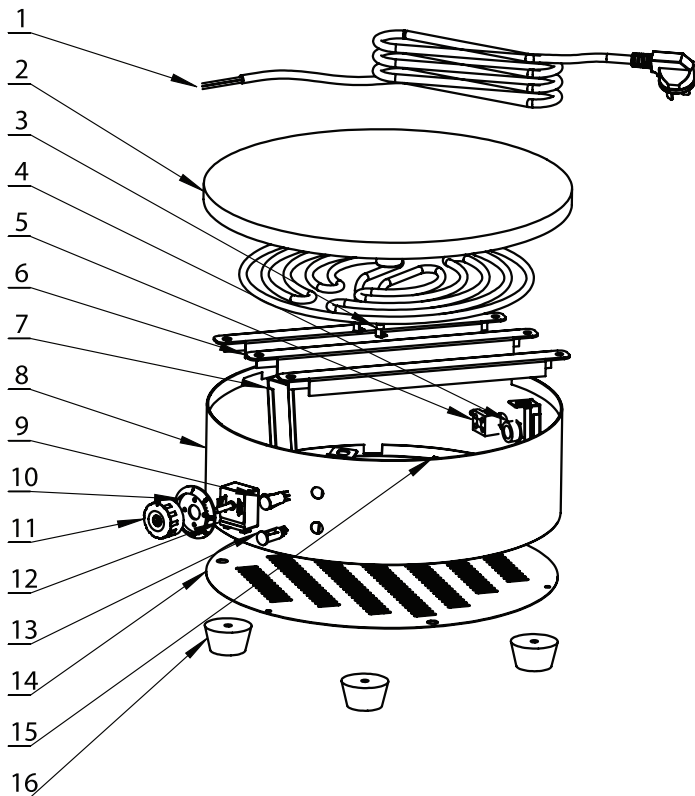
KT1 - Thermostat (30-300°C)

HL1 - Power Indicator

HL2 - Heater Indicator

HE1 - Heater

# MACHINE DIAGRAM



NO.	ITEM
1.	Plug
2.	Top Plate
3.	Heating Pipe
4.	Waterproof Connector for Power Cord
5.	Terminal
6.	Heat Plate
7.	Bracket A
8.	Circular Hoardings
9.	Green Indicator
10.	Dial
11.	Knob
12.	Thermostat
13.	Orange Indicator
14.	Base Plate
15.	Bracket B
16.	Appliance feet

**SCAN ME!**



[www.a1equipment.co.uk](http://www.a1equipment.co.uk)

**A1 Equipment Ltd**  
**Unit 6, Prologis Park Eastman, Eastman Way,**  
**Hemel Hempstead, HP2 7DU**



**A1 EQUIPMENT**