



**ELECTRIC  
CREPE MAKER  
SINGLE**

**USER MANUAL**

**MODEL NO: HX8668**

# SAFETY INSTRUCTIONS

- The temperature of the working environment can not exceed 50°C
- This equipment should be used as directed.
- Installation and maintenance should be performed by professional technicians.
- Ensure that the operating voltage of this equipment matches the supplied voltage.
- Keep it away from flammable objects to prevent accidental fires.
- During transportation, ensure the equipment is handled with care to prevent violent shaking, crashing, or being placed upside down.
- Store it in a well-ventilated warehouse with dry air and no corrosive gases.

# TECHNICAL SPECIFICATION

Model	HX8668
Voltage (V)	220/110
Frequency (Hz)	50/60
Power (kW)	3kW
Dimension (mm)	450x510x235mm
G.W	26kg

## OPERATING

- Connect the power and set the temperature controller to the desired level.
- Once the temperature reaches the set point, the equipment is ready for use.

## CLEANING & MAINTENANCE

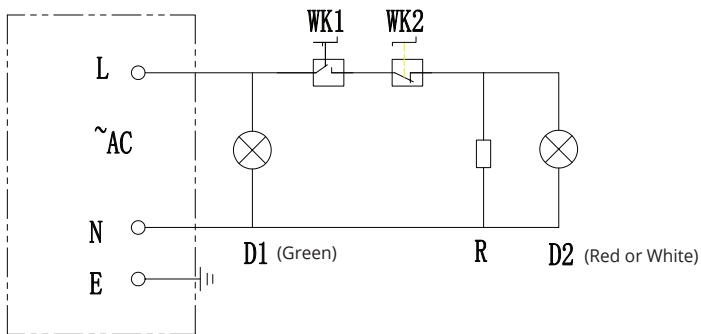
- Disconnect the power before cleaning the equipment.
- Use a non-corrosive cleaner to clean the surface.

**WARNING: DO NOT SPRAY WATER ON THE TEMPERATURE CONTROL INSTRUMENT.**

# TROUBLESHOOTING

NO.	Fault	Probable Cause	Solution
1	Light not on	1. Not plugged in 2. The light bulb is burnt	1. Ensure the machine is plugged in 2. Replace the light bulb
2	Doesn't Heat	1. Loose wire in heating tube 2. Heating tube burnt 3. Broken capacitor	1. Tighten screws 2. Replace heating tube 3. Replace capacitor
3	Overheating	1. Broken thermostat	1. Replace the thermostat

## ELECTRICAL DIAGRAM



D1 - Power Indicator

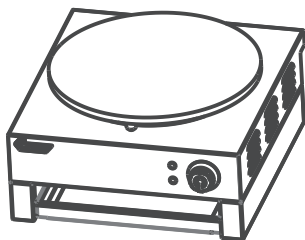
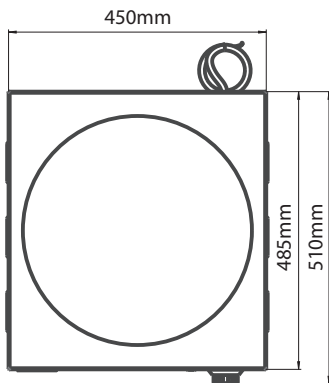
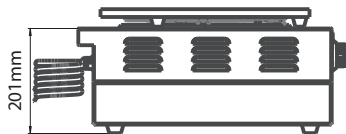
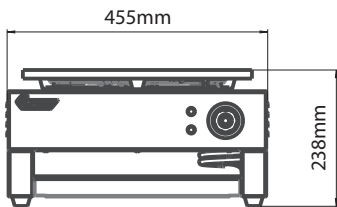
WK1 - Thermostat

WK2 - Resettable Thermostat (WK-F350)

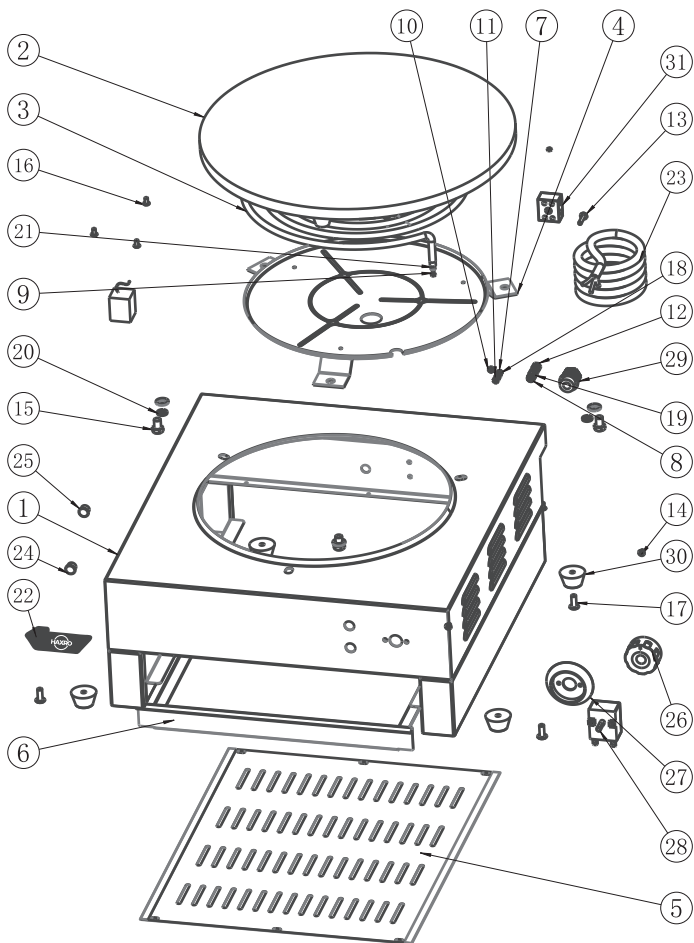
R - Heat Pipe (3kW)

D2 - Heating Indicator

# MEASUREMENT DIAGRAM



# MACHINE DIAGRAM



NO.	ITEM	NO.	ITEM
1.	Frame	19.	M6 Spacer Medium
2.	Furnace Plate	20.	M8 Spacer Medium
3.	Heat Pipe	21.	M3 Carrier Ring
4.	Heating Tube Pressure Plate Welding Component	22.	Trademark of HAXRO
5.	Bottom Sealing Plate	23.	Single Head Power Cord
6.	Drawer	24.	White Plastic Indicator Light
7.	M4 x 12 Small Element Head Copper Screw	25.	Green Plastic Indicator Light
8.	M6 x 16 Small Element Head Copper Screw	26.	Knob
9.	M3 Copper Nut	27.	Knob Holder
10.	M4 Hex Nut	28.	Temperature Controller 60-300 °C
11.	M4 Copper Nut	29.	Power Cable Head PG11
12.	M6 Copper Nut	30.	Rubber Base 9#
13.	M4 x 20 with Elastic Flat Cross Small Round Head Screw	31.	Ceramic Terminal Post
14.	M4 x 6 Screw		
15.	M8 x 12 Hex Bolt		
16.	M4 x 8 Self Tapping Screw		
17.	M6 x 16 Self Tapping Screw		
18.	M4 Spacer Medium		

**SCAN ME!**



[www.a1equipment.co.uk](http://www.a1equipment.co.uk)

**A1 Equipment Ltd**  
**Unit 6, Prologis Park Eastman, Eastman Way,**  
**Hemel Hempstead, HP2 7DU**



**A1 EQUIPMENT**