



BELGIAN WAFFLE MAKER

*This instruction manual covers the following makers
120 volts - 1100 watts - 2200 watts*

USER MANUAL

MODEL NO: HX8736

SAFETY INSTRUCTIONS

- Ensure proper grounding of the product before use.
- Handle the product with care during transportation to prevent any damage from vibrations or shocks.
- For long-term storage, ensure the product is kept in a well-ventilated area free of corrosive gases.
- If temporary storage outdoors is necessary, protective measures against moisture and sun exposure must be taken.

TECHNICAL SPECIFICATION

Model	HX8736
Dimension	245x380x260
Voltage (V)	220/110
Power (KW)	1.34kW
Packing Size (mm)	50/60

INSTALLATION

INSTALLATION

- Place the product on a stable, non-flammable surface. Ensure a clearance of at least 10 cm on the sides and 20 cm at the back from any flammable materials (such as brick walls).
- The equipment must be connected to a power supply matching the voltage specified on the product's nameplate.
- Install an appropriate power switch, fuse, and leakage protector near the equipment. Do not obstruct the switch with any objects to ensure easy access.
- Grounding is mandatory for safe operation.
- Before turning on the equipment, check that all electrical components are securely connected, and grounding is reliable.
- Use the same type of cable if replacing the power line, and have a professional handle the replacement.
- Electrical connections and maintenance should only be performed by a certified electrician.

OPERATING INSTRUCTIONS

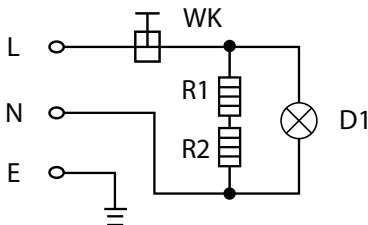
OPERATING INSTRUCTIONS:

1. The product's temperature control is located at the front. Adjust the knob to set the desired heating temperature.
2. Connect the power supply and switch on the equipment. The power indicator will light up. Rotate the temperature control knob clockwise to the required temperature. The orange light indicates that the heating element is active and the temperature is rising.
3. Once the desired temperature is reached, the orange light will turn off, and the heating will stop. The thermostat will automatically maintain the set temperature.
4. After heating, clean the cooking plates and prepare the waffle mix. Pour the mix into the mould, close the lid, and set the timer. Once the timer alerts you, open the mould, and remove the waffles carefully.
5. If any abnormalities occur during use, stop the operation immediately and troubleshoot before continuing.

CLEANING & MAINTENANCE

- Always disconnect the power supply before cleaning to prevent accidents.
- After daily use, wipe the surface of the equipment and power cord with a damp cloth and a non-corrosive cleaning agent. Do not rinse the equipment with water directly as it may damage the electrical components.
- Regularly clean the cooking plates to prevent spills and maintain hygiene.

ELECTRICAL DIAGRAM



R1, R2 - All Mode of Heating Lamp

D - Thermal Heating Lamp

WK1 - Temperature Controller

SCAN ME!



www.a1equipment.co.uk

A1 Equipment Ltd
Unit 6, Prologis Park Eastman, Eastman Way,
Hemel Hempstead, HP2 7DU



A1 EQUIPMENT