



## **CHURRO MAKER**

### **USER MANUAL**

**MODEL NO: HX8766**

# SAFETY INSTRUCTIONS

- Ensure the product is handled carefully during transportation to prevent any damage due to severe vibrations or impacts.
- Store the product in a well-ventilated warehouse without corrosive gases. Avoid long-term storage in open areas. If temporary storage in an open area is necessary, ensure proper protection against weather conditions.

# TECHNICAL SPECIFICATION

Model	HX8766
Dimensions (mm)	360x300x260
Voltage (V)	220
Power (KW)	1.75
Packing Size (mm)	425x370x275
Control Switches	1

# INSTALLING

- Install the product on a stable, flat surface. Ensure that it is placed at least 10 cm away from inflammable materials on the sides and 20 cm from the back.
- Use the equipment with the specified voltage as indicated on the product's nameplate.
- Install a suitable power switch, fuse, and leakage protection device near the equipment. Keep the area around the switch clear for easy operation.
- Ensure the equipment is properly grounded before use.
- Before starting the machine, verify that all electrical connections are secure and that the grounding is reliable.
- If the power cable is damaged, it must be replaced with a cable of the same type by a professional electrician.
- Electrical installation and maintenance should be performed by certified electricians.

# INSTRUCTIONS FOR USE

## TEMPERATURE CONTROL:

- Connect the machine to the power supply. The power switch will light up, indicating the machine is powered on.
- Adjust the temperature using the control knob on the front panel to the desired setting.
- When the set temperature is reached, the heating indicator (orange light) will turn on, indicating that the machine is heating.
- The heating process will cycle automatically to maintain the set temperature. When the temperature drops below the set point, the thermostat will re-engage the heating element.

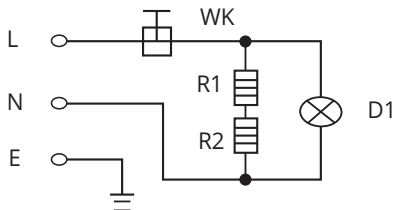
## OPERATING:

- After the machine has preheated, add the prepared churros mixture into the mold.
- Set the timer according to the required cooking time.
- Once the timer indicates that cooking is complete, carefully remove the churros from the mold using a wooden stick or similar utensil.
- If any issues or abnormalities occur during use, immediately turn off the churro maker.

# CLEANING & MAINTENANCE

- Always disconnect the machine from the power supply before cleaning to prevent accidents.
- Use a soft cloth and a non-corrosive cleaning agent to clean the machine's surfaces. Do not rinse the machine with water directly, as this may damage its electrical components.
- Ensure all spills are cleaned promptly to maintain the machine's hygiene and longevity.

# ELECTRICAL DIAGRAM



R1, R2 - All Mode of Heating  
D - Thermal Heating Lamp  
WK1- Temperature Controller

**SCAN ME!**



[www.a1equipment.co.uk](http://www.a1equipment.co.uk)

**A1 Equipment Ltd**  
**Unit 6, Prologis Park Eastman, Eastman Way,**  
**Hemel Hempstead, HP2 7DU**



**A1 EQUIPMENT**