



BUBBLE WAFFLE MAKER

USER MANUAL

MODEL NO: HX8800

SAFETY INSTRUCTIONS

- Ensure the power supply voltage matches the rated voltage of the device.
- Install a well-grounded three-pin socket near the device.
- The equipment temperature is set at $250^{\circ}\text{C} \pm 5\%$.
- The device features a timer that prompts the operation time. Note that the timer does not affect the electrical performance of the equipment.

TECHNICAL SPECIFICATION

Model	HX8800
Voltage (V)	220V/50Hz
Power (KW)	1.4
Size (mm)	300x230x250
G.W/N.W	5.6KG/5KG
Package Size	400x260x300mm

OPERATION

Powering On:

- Plug in the power socket and press the power switch. The indicator light will turn on.
- Rotate the thermostat knob to set the desired temperature. The device will start heating.
- When the temperature reaches the set value, the device will automatically stop heating. It will resume heating when the temperature drops below the set value, maintaining a constant temperature cycle.

Heating Time:

- The device can reach a maximum temperature of 300°C within approximately 15 minutes from powering on.
- Adjust the time according to different recipes and desired food colour. Generally, longer cooking times result in darker food. Shorter times may leave the food undercooked and unhealthy.

Cooking Procedure:

- After the equipment reaches 250°C, lightly spread a layer of edible vegetable oil on the mold and pour the mixture into it.
- Close the cover and set the timer on the right side (0 to 5 minutes). The operator can select the desired time. When the set time is reached, a "ding" sound will indicate that cooking is complete.
- Prepare for the next cook. After finishing, turn off the power.

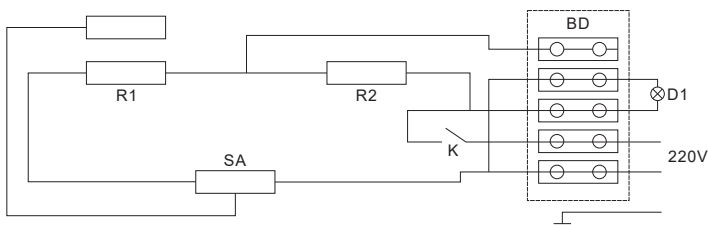
CLEANING & MAINTENANCE

- Clean the equipment with a wet towel and a small amount of cleaning liquid.
- Do not clean directly with water or immerse in water, as this can damage the electrical components and pose a safety hazard.

TROUBLESHOOTING

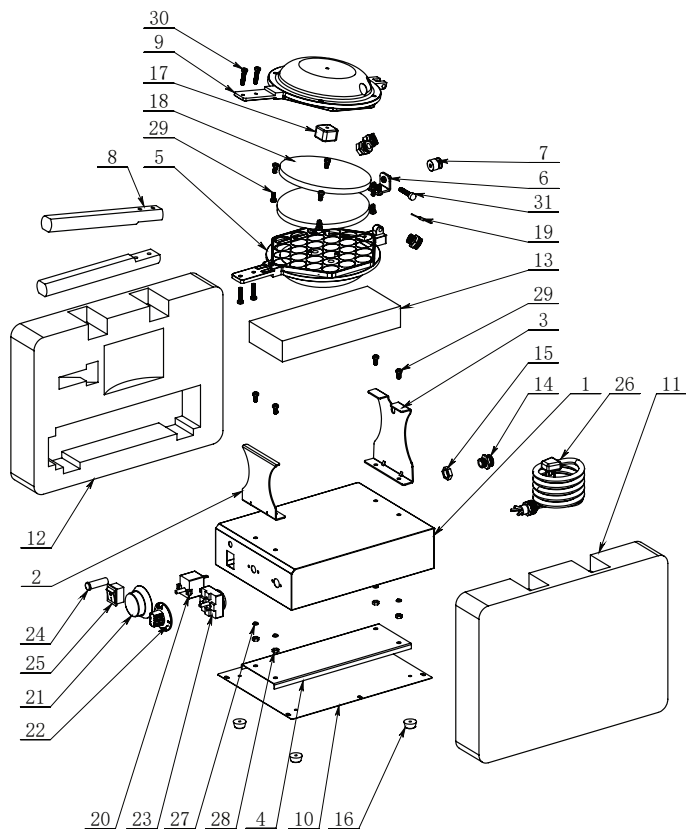
NO.	Fault	Probable Cause	Solution
1	No heating despite the power and indicator light being on	<ol style="list-style-type: none">1. The thermostat is damaged.2. One of the heating elements is damaged.	<ol style="list-style-type: none">1. Replace the thermostat.2. Replace the damaged heating element (Note: There are two heating elements, each 110V, and 220V in series).
2	Overheating	<ol style="list-style-type: none">1. The thermostat is damaged.	<ol style="list-style-type: none">1. Replace the thermostat.
3	The indicator light is not working	<ol style="list-style-type: none">1. The indicator light is burnt out.	<ol style="list-style-type: none">1. Replace the indicator light.
4	The indicator and heating is not working	<ol style="list-style-type: none">1. Power supply issue.2. Incorrect power connection.3. The fuse is burnt out.	<ol style="list-style-type: none">1. Check if the machine is plugged in.2. Ensure correct power connection.3. Replace the fuse.

ELECTRICAL DIAGRAM



- SA: Temperature Controller
- R2: Bottom Heating Element
- K: Power Switch
- R1: Up Heating Element
- D1: Indicator Light
- BD: Amphenol Connector

MACHINE DIAGRAM



NO.	ITEM	NO.	ITEM
1.	Edge	19.	Fuser TF350°C
2.	Front Support	20.	0-300°C Temperature
3.	Rear Support	21.	Knob (with Seat)
4.	Rack Reinforcement Ribs	22.	Timer Screw Cover
5.	Upper Heating Plate Component	23.	Timer
6.	Heating Plate Holder	24.	Indicator Light
7.	Heating Plate Shaft	25.	Rocker Switch
8.	Aluminium Handles	26.	Wire Cable Head
9.	Lower Heating Plate Component	27.	Missile Medium
10.	Bottom Sealing Plate	28.	M6 Nut
11.	Left Foam	29.	M6X10 Cross Source Machine
12.	Right Foam	30.	M6X25 Source Self Tapping
13.	Middle Foam	31.	M6X30 Hexagon Socket Screw
14.	Connector		
15.	Metal Hose Fixing Head		
16.	Rubber Base		
17.	Two Ceramic Columns		
18.	Thermal Insulation Cotton		

SCAN ME!



www.a1equipment.co.uk

A1 Equipment Ltd
Unit 6, Prologis Park Eastman, Eastman Way,
Hemel Hempstead, HP2 7DU



A1 EQUIPMENT