



JUICE DISPENSER 18L

USER MANUAL

MODEL NO: HX8990 / HX8062 / HX8599

SAFETY INSTRUCTIONS

- Installation, maintenance, and repairs must be performed by certified professionals or personnel authorised by the manufacturer.
- Always follow these instructions carefully to ensure safe operation.
- Keep this manual for future reference and provide it to any future users.
- After unpacking, verify that all parts are included and undamaged. If any issues are found, do not use it and contact the seller.
- Keep all packaging materials away from children to avoid risk of injury (e.g., plastic bags, small parts).
- Always turn off the machine when not in use or when unattended to prevent accidents or damage.
- Do not wash the unit by spraying it directly with water.
- Regularly clean stainless-steel surfaces to prevent damage from oxidation or chemicals.

TECHNICAL SPECIFICATION

Model	HX8990	HX8062	HX8599
Capacity	18L	2 x 18L	3 x 18L
Voltage (V)	220V - 240V 50HZ/60HZ 110V - 120V	220V - 240V 50HZ/60HZ 110V - 120V	220V - 240V 50HZ/60HZ 110V - 120V
Power (Cold)	180W	280W	380W
Power (Hot)	540W	1080W	1620W
Cold Temp	7-12°C	7-12°C	7-12°C
Hot Temp	52-58°C	52-58°C	52-58°C
Size (mm)	470x360x740	510x470x740	750x470x740
Weight	28kg	35kg	40kg

INSTALLING AND OPERATING

- Place the machine on a flat, stable surface, away from direct sunlight.
- Ensure at least 15cm of clearance around the unit for proper ventilation.
- Check that the power supply matches the machine's rated voltage. Use a cable with a cross-section of 1.5–2.5mm².
- Connect the machine to a grounded socket with proper fusing.
- Slightly incline the front lower than the back to allow drainage through the hose.

OPERATING - For Cold Beverages

- Pour the beverage into the container without exceeding the maximum level.
- Do not fill liquids over 35°C to avoid affecting the cooling performance.
- Plug into a grounded socket.
- Switch to 'Cooling' mode and start the stirrer or dispenser.
- When cooled, gently press the spout lever to pour the drink.
- The compressor will cycle on/off automatically based on temperature.
- Wait 5 minutes before restarting after a power interruption.

OPERATING - For Hot Beverages

- Plug into a grounded socket.
- Switch to 'Heating' mode and activate the stirrer.
- Fill with at least 6L of beverage to avoid dry heating.
- When heated, press the lever to dispense.
- The heater will turn on/off automatically with temperature changes.
- Clean the containers daily to ensure hygiene.

CLEANING & MAINTENANCE

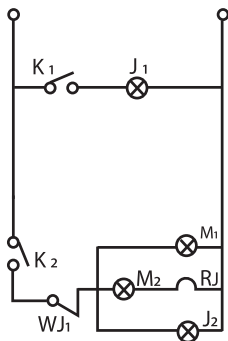
- Use a soft cloth with mild detergent. Do not use abrasive materials or spray with water.
- Regularly clean and inspect for damage to prolong machine life.
- Contact a qualified technician for issues related to the refrigeration system.

TROUBLESHOOTING

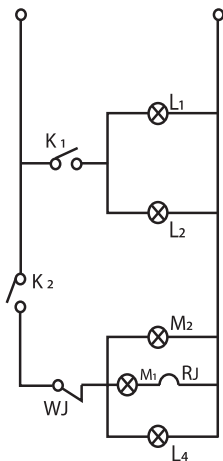
NO.	Fault	Probable Cause	Solution
1	The compressor stops working	<ol style="list-style-type: none"> 1. The supply power is off or not connected. 2. Switch damaged 3. Circuit trouble. 4. Overload and the protector are broken. 	<ol style="list-style-type: none"> 1. Check the supply power and the socket 2. Replace the switch. 3. Check and repair 4. Check and replace
2	Not cooling	<ol style="list-style-type: none"> 1. The capillary stopped working 2. The refrigerant leaked 3. The electric fan is broken 	<ol style="list-style-type: none"> 1. Replace the capillary or dry the filter 2. Check the systems and refill the refrigerant 3. Replace the electrical machine
3	Unusual water flow	<ol style="list-style-type: none"> 1. Differences in the pump inside 2. Impeller and holes damaged 3. Circuit damaged 4. Big clearance between the impeller and crock 	<ol style="list-style-type: none"> 1. Clean 2. Replace the impeller and pump 3. Check and repair 4. Adjust the clearance
4	Leaking container	Worn or misaligned seal	Reinstall or replace seal
5	Leaking valve	Faulty valve seal	Reinstall or replace seal

ELECTRICAL DIAGRAM

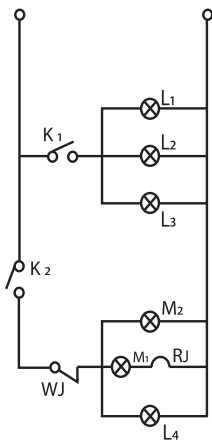
HX8990 - 18L



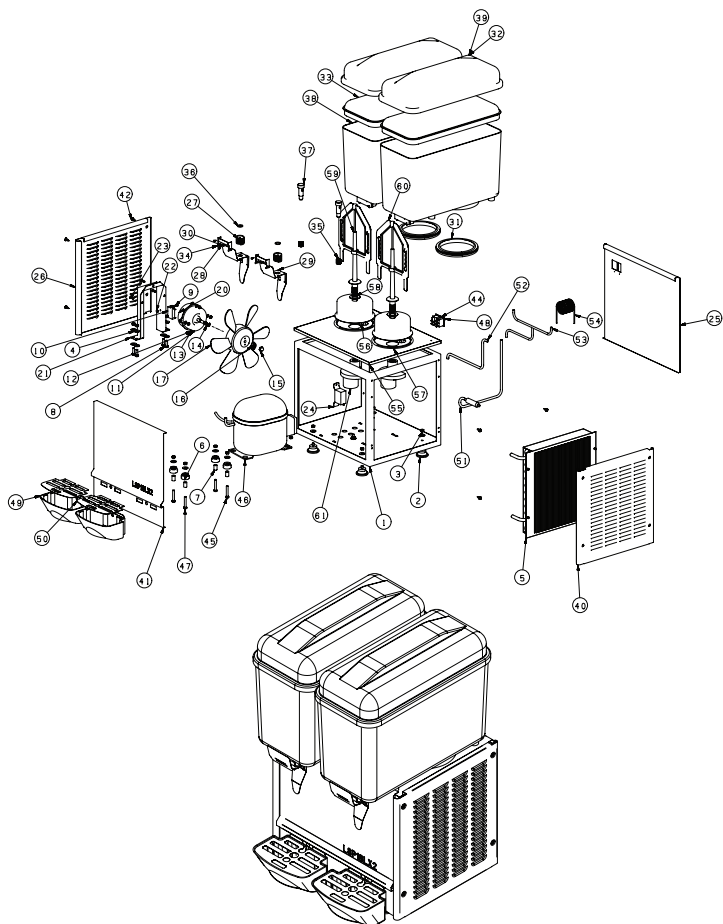
HX8062 - 2 X 18L



HX8599 - 3 x 18L



MACHINE DIAGRAM



SPARE PARTS

NO.	ITEM	NO.	ITEM
1.	Lid	14.	Compressor
2.	Stainless Steel Valve	15.	Overload Protector
3.	Container (Crock)	16.	Base
4.	Mixing Blade	17.	Power Switch
5.	Mixing Shaft	18.	Cooling Switch
6.	Handle	19.	Mixing Switch
7.	Seal Ring	20.	Mixing Switch
8.	Condenser Assembly	21.	Side Panels
9.	Electric Fan	22.	Front & Back Panels
10.	Evaporator Unit	23.	Cover Sprinkler*
11.	Automatic Temperature Controller	24.	Electrical Module*
12.	Drip Tray	25.	Cover Panel
13.	Mixing Motor Assembly		

*No. 23 & 24 is for the machine with LED light

SCAN ME!



www.a1equipment.co.uk

A1 Equipment Ltd
Unit 6, Prologis Park Eastman, Eastman Way,
Hemel Hempstead, HP2 7DU



A1 EQUIPMENT